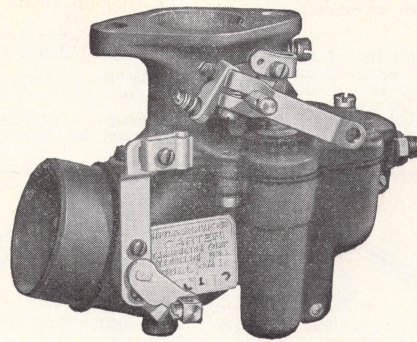


MODEL T194 2 TON



DODGE TRUCK CAB-OVER-ENGINE 1949-1950

B-B UP-DRAFT CARBURETOR—No. 6N1—LIST PRICE \$15.00

A \$3.00 exchange allowance is deducted from the list price if buyer turns in old carburetor.

CARBURETOR SPECIFICATIONS

For Dodge Six Cylinder Engine: 3-7/16 Inch Bore, 4 1/4 Inch Stroke

Dimensions: Flange size, 1 1/2 inch (38.10 mm).

Throttle bore, 1-7/16 inch (38.51 mm).

Main venturi, 1 1/8 inch I. D. (28.58 mm).

Air bleed through venturi to idle passage .0885 to .0905 inch diameter (2.25 to 2.30 mm) drill.

Float Setting: Distance from top of float to top surface of lower body casting 1/32 to 1/16 inch (.79 to 1.59 mm).

Vent: To float chamber size, No. 30 (3.26 mm) drill.

Balance Vent Tube: Inside diameter, 7/32 inch (5.56 mm).

Gasoline Intake Needle: Triangular, horizontal. No. 44 (2.18 mm) drill in needle seat.

Idle Jet Tube: Jet size, .0236 inch (.60 mm) drill.

Idle Ports: Lower port size: .078 to .080 inch (1.98 to 2.03 mm) diameter. Top of port located .000 to .004 inch (.0 to .102 mm) below lower edge of valve.

Upper port size: .053 to .057 inch (1.35 to 1.45 mm) diameter (for idle adjustment screw).

Set Idle Adjustment Screw: 1/2 to 1 turn open. For richer mixture, turn screw out. Do not idle engine below 300 r.p.m. or 6 m.p.h.

Main Metering Screw: Calibrated to flow 316 to 320 cc per minute. (Do not gauge for size. If in doubt, replace with new part.)

Nozzle: Discharge jet size, No. 33 (2.87 mm) drill. Side holes: 2—.0394 inch (1.00 mm) drill 1/16 inch (1.59 mm) from shoulder.

1—.051 inch (1.3 mm) drill 3/8 inch (9.525 mm) from shoulder.

1—.063 inch (1.6 mm) drill 23/32 inch (18.256 mm) from shoulder.

1—.051 inch (1.3 mm) drill 1-1/16 inch (26.99 mm) from shoulder.

Air Bleed to Nozzle: (Vent tube) Size, .0394 inch (1.00 mm) drill.

Step-Up Jet: (Power Orifice) Size, .0472 inch (1.20 mm) drill.

Accelerating Pump: Type, low pressure, delayed action. Stroke: Summer setting (inner hole, short stroke) 9/16 inch (14.29 mm).

Winter setting (outer hole, long stroke) 1 inch (25.40 mm).

Pump intake ball check: Size .125 inch (3.175 mm).

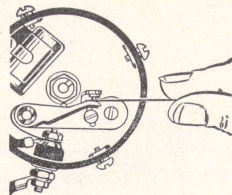
Pump discharge (through nozzle).

Motor Tune-Up—Be Accurate! Always Use Feeler Gauges!

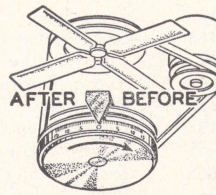
CAUTION: Change worn or leaky flange gaskets. Tighten manifold bolts and test compression before adjusting carburetor.



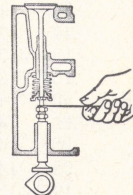
Spark Plug
Gap
.036"



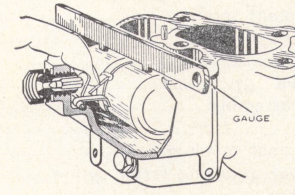
Breaker Point
Setting
.020"



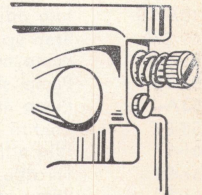
Ignition Timing
(Hot)
Breaker Points to Open:
T. D. C.



Valve Setting
(Hot)
Intake .010"
Exhaust .014"



Float Setting
(Use Gauge)
1/32 to 1/16 Inch



Idle Adjustment
Screw Setting
1/2 to 1
Turn Open

CARBURETOR ADJUSTMENTS

To Secure a Good Idle: Set throttle lever adjusting screw so motor runs approximately 300 r.p.m. Then set idle adjustment screw so motor fires evenly. Correct setting will be found between 1/2 to 1 turn open. A richer mixture is

obtained by backing out adjustment screw—a leaner mixture by turning screw in. If motor stalls while idling, remove idle passage tube and idle jet tube and clean with compressed air.

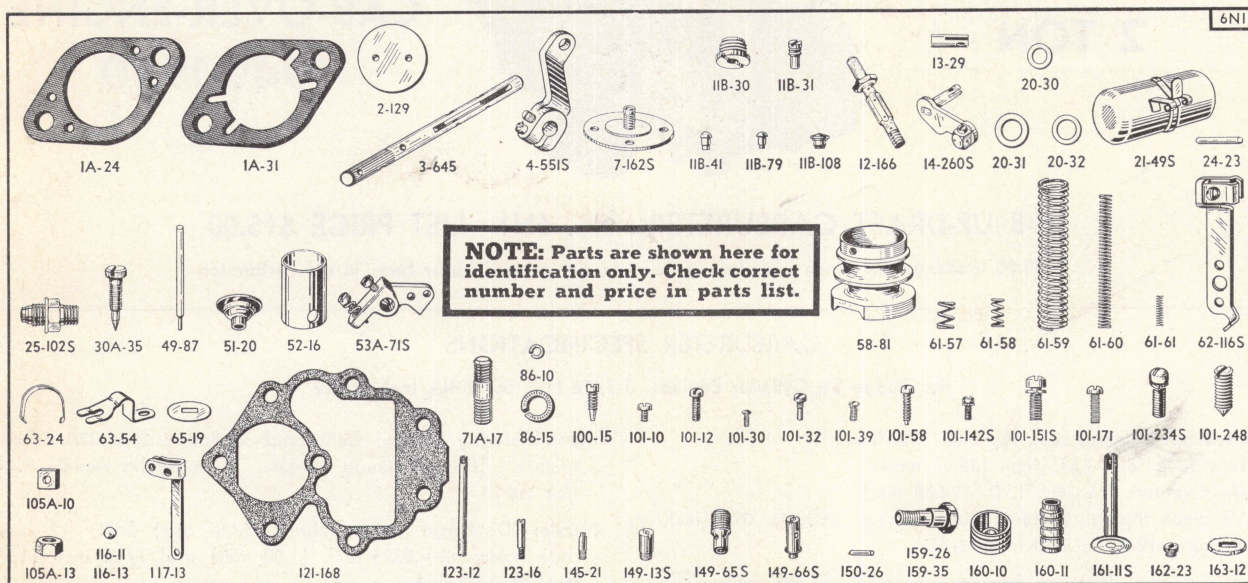
EFFECTIVE JANUARY 1, 1948, ADD 30% TO LIST PRICE OF CARBURETERS AND EFFECTIVE OCTOBER 1, 1948, ADD 20% TO ALL OTHER PRICES SHOWN WITH FRACTIONAL ADJUSTMENT TO NEAREST EVEN CENT.

To Improve Acceleration: Examine pump link setting: For winter driving, link screw should be set in outer hole, giving long stroke; for hot weather, in high altitudes, pump link should be connected in inner hole, giving short stroke. If this does not give desired results, the main metering jet, pump metering jet, check valve assembly and pump valve assembly should be removed and cleaned with compressed air.

If Motor Loads—Check Float Level: Wear on lip of float lever will raise float level from factory setting, causing carburetor to load up. To lower float level, bend lip of float lever toward needle. To raise float level, bend lip away from needle. A very slight bend is sufficient. Be sure to bend lip of float **not** bracket.

Economy: (a) Maximum economy is secured only when breaker points, spark plugs, valves and motor timing are set to manufacturer's specifications.

- (b) Float level must set as instructed on Page 1.
- (c) Step-up valve cage assembly should be examined. Ball check in this assembly must seat and move freely. When reassembling valve cage must be screwed in tight against seat.
- (d) Step-up push rod must move freely in upper and lower guides.
- (e) Step-up piston in upper casting should not bind and must be free from dirt.



Dodge Carburetor No. 6NI—1949-1950—List Price \$15.00

Part No.	PART NAME	List Price	Part No.	PART NAME	List Price
1A-24	Flange gasket—for use with governor.....	\$0.06	86-10	Lock washer01
1A-31	Flange gasket—for use without governor.....	.06	86-15	Flange stud lock washer.....	(2) .01
2-129	Throttle valve20	100-15	Throttle lever set screw.....	.05
3-645	Throttle shaft60	101-10	Wire clamp screw.....	.05
4-551S	Throttle lever assembly.....	.70	101-12	Clamp screw05
7-162S	Choke valve assembly.....	.50	101-30	Choke valve screw.....	(2) .05
11B-30	Step-up piston plug.....	.10	101-32	Pump link screw.....	.05
11B-31	Idle hole plug10	101-39	Throttle valve screw.....	(2) 2 for .05
11B-41	Rivet plug	(3) .02	101-58	Throttle lever adjusting screw.....	.05
11B-79	Rivet plug02	101-142S	Attaching screw and washer assembly.....	(3) .05
11B-108	Idle port rivet plug.....	.02	101-151S	Body attaching screw and washer assembly (lower)	(2) .05
12-166	Nozzle60	101-171	Throttle lever clamp screw.....	.05
13-29	Choke shaft stub15	101-234S	Body attaching screw and washer assembly (upper)	(4) .05
14-260S	Choke assembly with clamp and screw.....	.40	101-248	Set screw05
20-30	Nozzle gasket05	105A-10	Choke tube clamp nut.....	.05
20-31	*Needle seat gasket.....	.05	105A-13	Flange nut	(2) .05
20-32	Metering screw gasket.....	.05	116-11	Pump check ball.....	.02
21-49S	Float and lever assembly.....	.80	116-13	Step-up check ball.....	.02
24-23	Float lever pin.....	.05	117-13	Pump link15
25-102S	Needle and seat assembly.....	.80	121-168	Body gasket10
30A-35	Idle adjustment screw.....	.30	123-12	Idle passage tube.....	.10
49-87	Step-up push rod10	123-16	Idle orifice tube.....	.20
51-20	Pump collar10	145-21	Vent tube05
52-16	Pump sleeve20	149-13S	Check valve cage assembly.....	.30
53A-71S	Pump arm assembly.....	.60	149-65S	Pump valve cage assembly.....	.30
58-81	Venturi50	149-66S	Step-up valve cage assembly.....	.40
61-57	Idle adjustment screw spring.....	.05	150-26	Pump collar pin.....	.02
61-58	Throttle lever adjusting screw spring.....	.05	159-26	Main metering screw—I size lean.....	.30
61-59	Pump spring10	159-35	Main metering screw.....	.30
61-60	Step-up piston spring.....	.05	160-10	Pump piston40
61-61	Step-up spring05	160-11	Step-up piston20
62-116S	Choke tube bracket assembly.....	.25	161-11S	Pump rod plate and rod assembly.....	.30
63-24	Float lever pin retainer.....	.05	162-23	Power orifice10
63-54	Packing retainer10	163-12	Felt packing05
65-19	Pump link cover plate.....	(2) .02			
71A-17	Flange stud05			

*Gaskets so marked must be soaked in 90 proof denatured alcohol for 15 minutes, installed on part and let dry before using.
 —Parts so marked are new and listed for the first time.
 NOTE: Small figures in parentheses preceding list price indicate number of pieces used in one carburetor. Where no figure is shown, only one is used.