

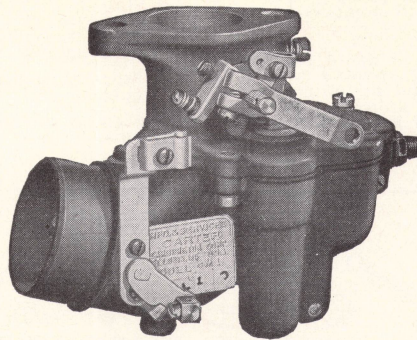
MODELS

B-2-GM, GMA, HM, HMA, HHM,
HHMA, JM, JMA, KM, KMA
1950

B-3-GM, GMA, HM, HMA, HHM,
HHMA, JM, JMA, KM, KMA
1951-52

B-4-HM, JM, KMA—1953

C-1-HM6, JM6, KMA6—1954



DODGE TRUCK CAB-OVER-ENGINE 1950-1954

B-B UP-DRAFT CARBURETERS—Nos. 6N1-6N2

CARBURETOR SPECIFICATIONS

For Dodge Six Cylinder Engines:

3-7/16 Inch Bore, 4/4 Inch Stroke: B-2-GM, GMA, HM, HMA, HHM, HHMA; B-3-GM, GMA, HM, HMA, HHM, HHMA

3-7/16 Inch Bore, 4/2 Inch Stroke: B-2-JM, JMA, KM, KMA; B-3-JM, JMA, KM, KMA; B-4-HM; C-1-HM6

3-7/16 Inch Bore, 4 3/4 Inch Stroke: B-4-JM, KMA; C-1-JM6, KMA6

Dimensions: Flange size, 1 1/2 inch (38.10 mm).

Throttle bore, 1-7/16 inch (38.51 mm).

Main venturi, 1 1/8 inch I. D. (28.58 mm).

Air bleed through venturi to idle passage .0885 to .0905 inch diameter (2.25 to 2.30 mm) drill.

Float Setting: Distance from top of float to top surface of lower body casting 1/32 to 1/16 inch (.79 to 1.59 mm).

Vent: To float chamber size, No. 30 (3.26 mm) drill.

Balance Vent Tube: Inside diameter, 7/32 inch (5.56 mm).

Gasoline Intake Needle: Triangular, horizontal. No. 44 (2.18 mm) drill in needle seat.

Idle Jet Tube: Jet size, .0236 inch (.60 mm) drill.

Idle Ports: Lower port size: .078 to .080 inch (1.98 to 2.03 mm) diameter. Top of port located .000 to .004 inch (.0 to .102 mm) below lower edge of valve.

Upper port size: .053 to .057 inch (1.35 to 1.45 mm) diameter (for idle adjustment screw).

Set Idle Adjustment Screw: 1/2 to 1 turn open. For richer mixture, turn screw out. Do not idle engine below 300 r.p.m. or 6 m.p.h.

Main Metering Screw: Calibrated to flow 316 to 320 cc per minute. (Do not gauge for size. If in doubt, replace with new part.)

Nozzle: Discharge jet size, No. 33 (2.87 mm) drill.

Side holes: 2—.0394 inch (1.00 mm) drill 1/16 inch (1.59 mm) from shoulder.

1—.051 inch (1.3 mm) drill 3/8 inch (9.525 mm) from shoulder.

1—.063 inch (1.6 mm) drill 23/32 inch (18.256 mm) from shoulder.

1—.051 inch (1.3 mm) drill 1-1/16 inch (26.99 mm) from shoulder.

Air Bleed to Nozzle: (Vent tube) Size, .0394 inch (1.00 mm) drill.

Step-Up Jet: (Power Orifice) Size, .0472 inch (1.20 mm) drill.

Accelerating Pump: Type, low pressure, delayed action. Stroke: Summer setting (inner hole, short stroke) 9/16 inch (14.29 mm).

Winter setting (outer hole, long stroke) 1 inch (25.40 mm).

Pump intake ball check: Size .125 inch (3.175 mm).

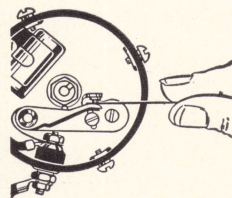
Pump discharge (through nozzle).

Motor Tune-Up—Be Accurate! Always Use Feeler Gauges!

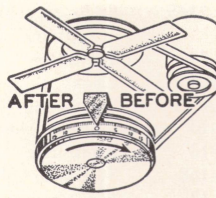
CAUTION: Change worn or leaky flange gaskets. Tighten manifold bolts and test compression before adjusting carburetor.



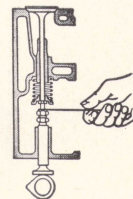
Spark Plug
Gap
.035"



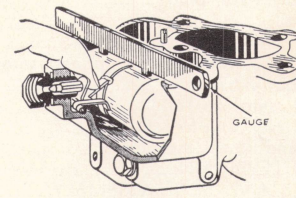
Breaker Point
Setting
.020"



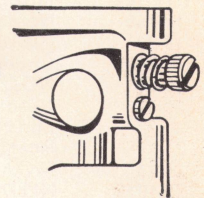
Ignition Timing
Breaker Points to Open:
1950-52—T. D. C.
1953—2° A. T. D. C.
1954—1° B. T. D. C.



Valve Setting
(Hot)
B-2-GM, GMA;
B-3-GM, GMA;
C-1-HM6
Intake .010"
Exhaust .014"
All Others
Intake .010"
Exhaust .018"



Float Setting
(Use Gauge)
1/32 to 1/16 Inch



Idle Adjustment
Screw Setting
1/2 to 1
Turn Open

CARBURETOR ADJUSTMENTS

To Secure a Good Idle: Set throttle lever adjusting screw so motor runs approximately 300 r.p.m. Then set idle adjustment screw so motor fires evenly. Correct setting will be found between 1/2 to 1 turn open. A richer mixture is

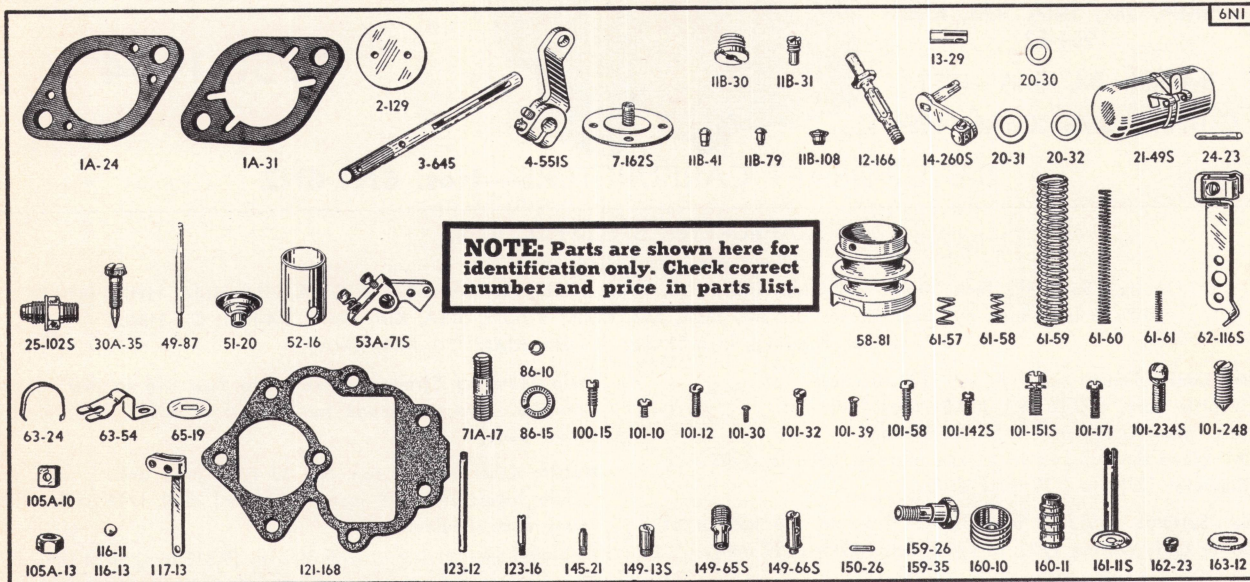
obtained by backing out adjustment screw—a leaner mixture by turning screw in. If motor stalls while idling, remove idle passage tube and idle jet tube and clean with compressed air.

To Improve Acceleration: Examine pump link setting: For winter driving, link screw should be set in outer hole, giving long stroke; for hot weather, in high altitudes, pump link should be connected in inner hole, giving short stroke. If this does not give desired results, the main metering jet, pump metering jet, check valve assembly and pump valve assembly should be removed and cleaned with compressed air.

If Motor Loads—Check Float Level: Wear on lip of float lever will raise float level from factory setting, causing carburetor to load up. To lower float level, bend lip of float lever toward needle. To raise float level, bend lip away from needle. A very slight bend is sufficient. Be sure to bend lip of float not bracket.

Economy: (a) Maximum economy is secured only when breaker points, spark plugs, valves and motor timing are set to manufacturer's specifications.

- (b) Float level must set as instructed on Page 1.
- (c) Step-up valve cage assembly should be examined. Ball check in this assembly must seat and move freely. When reassembling valve cage must be screwed in tight against seat.
- (d) Step-up push rod must move freely in upper and lower guides.
- (e) Step-up piston in upper casting should not bind and must be free from dirt.



Dodge Carburetors Nos. 6N1-6N2—1950-1954

WHEN SERVICING, USE GASKET ASSORTMENT No. 172A; REPAIR PACKAGE No. 1597

PART NAMES IN CAPITAL LETTERS, LISTED BELOW, INDICATE CONTENTS OF REPAIR PACKAGE

Part No.	PART NAME	Part No.	PART NAME
1A-24	FLANGE GASKET—FOR USE WITH GOVERNOR.	71A-17	Flange stud
1A-31	FLANGE GASKET—FOR USE WITHOUT GOVERNOR	86-10	Lock washer
2-129	Throttle valve	86-15	Flange stud lock washer..... (2)
3-645	Throttle shaft	100-15	Throttle lever set screw.....
4-551S	Throttle lever assembly.....	101-10	Wire clamp screw.....
7-162S	Choke valve assembly.....	101-12	Clamp screw
11B-19	Rivet plug (6N2)	101-30	Choke valve screw
11B-30	Step-up piston plug.....	101-32	PUMP LINK SCREW.....
11B-31	Idle hole plug	101-39	Throttle valve screw..... (2)
11B-41	Rivet plug	101-58	Throttle lever adjusting screw.....
11B-79	Rivet plug	101-142S	Attaching screw and washer assembly..... (3)
11B-108	Idle port rivet plug.....	101-171	Throttle lever clamp screw.....
12-166	Nozzle	101-234S	Body attaching screw and washer assembly (upper)
13-29	Choke shaft stub.....	101-248	Set screw
14-260S	Choke assembly with clamp and screw.....	105A-10	Choke tube clamp nut.....
20-30	NOZZLE GASKET	105A-13	Flange nut
20-31	Needle seat gasket.....	116-13	Step-up check ball.....
20-32	METERING SCREW GASKET.....	117-13	Pump link
21-49S	Float and lever assembly.....	121-168	BODY GASKET
24-23	FLOAT LEVER PIN.....	123-12	Idle passage tube.....
25-102S	NEEDLE AND SEAT ASSEMBLY.....	123-16	IDLE ORIFICE TUBE.....
30A-35	Idle adjustment screw.....	145-21	VENT TUBE
49-87	STEP-UP PUSH ROD.....	149-13S	CHECK VALVE CAGE ASSEMBLY.....
51-20	Pump collar	149-65S	PUMP VALVE CAGE ASSEMBLY.....
52-16	Pump sleeve	149-66S	STEP-UP VALVE CAGE ASSEMBLY.....
53A-71S	Pump arm assembly.....	150-26	Pump collar pin.....
58-81	Venturi	150-29	Venturi pin (6N2).....
61-57	Idle adjustment screw spring.....	159-26	Main metering screw—I size lean.....
61-58	Throttle lever adjusting screw spring.....	159-35	MAIN METERING SCREW.....
61-59	PUMP SPRING	160-10	Pump piston
61-60	STEP-UP PISTON SPRING.....	160-11	STEP-UP PISTON
61-61	Step-up spring	161-11S	Pump rod plate and rod assembly.....
62-116S	Choke tube bracket assembly.....	162-23	Power orifice
63-24	FLOAT LEVER PIN RETAINER.....	163-12	FELT PACKING
63-54	Packing retainer		
65-19	Pump link cover plate..... (2)		

NOTE: Figures in parentheses indicate number of pieces used in one carburetor. Where no figure is shown, only one is used.